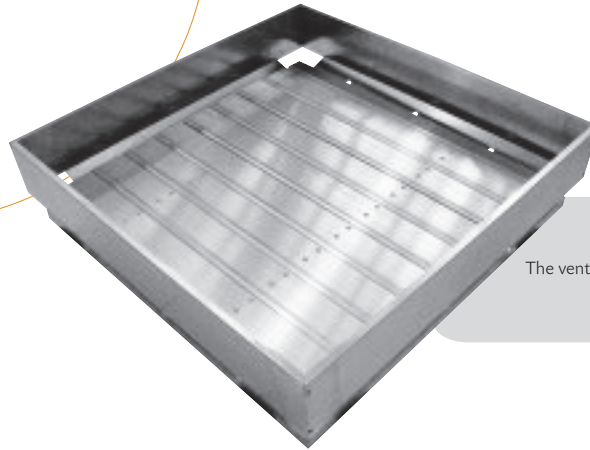


Waterproofed  
roof

Design  
Supply  
Installation

# adexsiUK

NSHEV conforms to  
NF EN 12101-2 and  
NFS 61 937-1.



NSHEV installed on the roof.  
The vents can be used on simplest projects  
as well as more architectural ones.

## DESCRIPTION

- Certilam T is a complete NSHEV (Natural Smoke and Heat Exhaust Ventilators) which has its own mechanisms.
- Certilam T frame profiles are available as standards to be integrated in all kind of structures.
- Its different dimensions allow a tailor-made manufacturing which respects architectural wefts and modules.
- Its aesthetic allows to be integrated:
  - on roof,
  - for any RAL paint or anodised finish.
- CE fix windshields are mandatory on the roof.

## REGULATION

- Certilam T is a complete NSHEV (Natural Smoke and Heat Exhaust Ventilators) conforms to NF EN 12101-2 and NFS 61 937-1 norms.

## PROFILES

- Extruded aluminium frame to fit any type of roof structure.
- Various types of profiles (F, G, J) in accordance with roofing type or glazing.

## PERFORMANCES

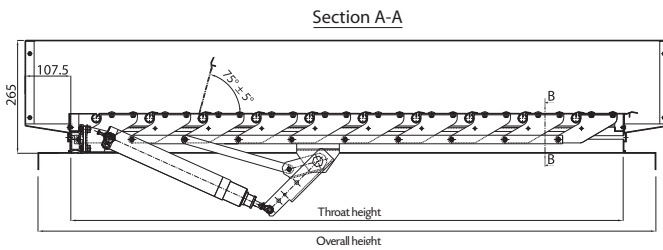
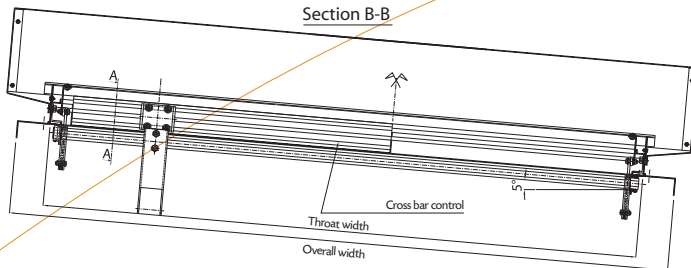
- Smoke vent conforms to NF EN 12101-2 and NFS 61 937-1 norms.
- 1200 J resistance.
- Classification air/water/wind: in process.
- Reliability: Re 1,000 and Re 10,000.
- Aerodynamic value: Cv from 0.62 without upstand and 0.67 with upstand.
- Snow load (SL250 and SL500).
- Ug: from 1.32 W m<sup>2</sup>/°K\* for insulated blades.

\* Test reports on demand.

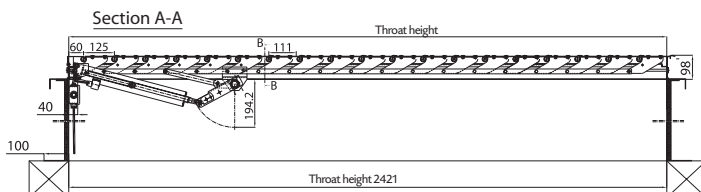
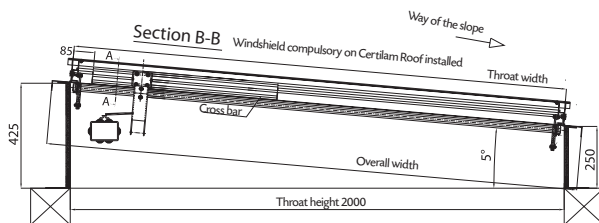
Waterproofed  
roof

# Certilam T

Smoke Vents Range



Princip of installation



Princip of installation on upstand with frame C

#### Tailor-made manufacturing:

- Throat width: mini 500, maxi 2,000 mm.
- Throat height: mini 800, maxi 3,500 mm.
- SGO: mini 1 m<sup>2</sup>, maxi 7 m<sup>2</sup> (CE mark).

#### INFILL

- Standard (No insulated) aluminium blade or thermal insulation with anodised or mill finish.
- Acoustic insulation option.
- Ug: 1,32 W/m<sup>2</sup> °C (for insulated blade).
- Acoustic insulation: Rw of 18 dB.

#### TYPES OF CONTROLS

By remote controlled:

- Electrical
- Pneumatical
- Mecanical

#### OPTIONS

- Insulated (bituminous) upstand (for installation on multilayered roof).
- Standard upstand without insulation.
- O/c switch (safety option)
- Thermal release (70, 100, 140 and 180°, compulsory).

#### INSTALLATION

- For roof installation to be integrated on upstand

A clear solution  
for smoke control  
and ventilation.



The Business Centre, Cardiff House,  
Cardiff Road, Vale of Glamorgan, CF63 2AW



(+44) 0845 0840 555



(+44) 0845 0840 556



info@adexsiuk.com